



Core Entities and Services User Guide

## **Oracle Banking Treasury**

Release 14.4.0.0.0

**Part No. F29596-01**

April 2020

---

# Copyright

Copyright: 2020

Copyright Holder: Oracle

Product Name: Oracle Financial Software Services, Oracle park, off western express highway, Goregaun (east) mumbai, Maharashtra 400 063, India, Phone Number - 91-22 6718 3000, 91-22 6718 3001. [www.oracle.com/financial-services](http://www.oracle.com/financial-services)

Oracle and Java are registered trademarks of Oracle and/or its affiliates. Other names may be trademarks of their respective owners.

U.S. GOVERNMENT END USERS: Oracle programs, including any operating system, integrated software, any programs installed on the hardware, and/or documentation, delivered to U.S. Government end users are “commercial computer software” pursuant to the applicable Federal Acquisition Regulation and agency-specific supplemental regulations. As such, use, duplication, disclosure, modification, and adaptation of the programs, including any operating system, integrated software, any programs installed on the hardware, and/or documentation, shall be subject to license terms and license restrictions applicable to the programs. No other rights are granted to the U.S. Government.

This software or hardware is developed for general use in a variety of information management applications. It is not developed or intended for use in any inherently dangerous applications, including applications that may create a risk of personal injury. If you use this software or hardware in dangerous applications, then you shall be responsible to take all appropriate failsafe, backup, redundancy, and other measures to ensure its safe use. Oracle Corporation and its affiliates disclaim any liability for any damages caused by use of this software or hardware in dangerous applications.

This software and related documentation are provided under a license agreement containing restrictions on use and disclosure and are protected by intellectual property laws. Except as expressly permitted in your license agreement or allowed by law, you may not use, copy, reproduce, translate, broadcast, modify, license, transmit, distribute, exhibit, perform, publish or display any part, in any form, or by any means. Reverse engineering, disassembly, or de-compilation of this software, unless required by law for interoperability, is prohibited. The information contained herein is subject to change without notice and is not warranted to be error-free. If you find any errors, please report them to us in writing

This software or hardware and documentation may provide access to or information on content, products and services from third parties. Oracle Corporation and its affiliates are not responsible for and expressly disclaim all warranties of any kind with respect to third-party content, products, and services. Oracle Corporation and its affiliates will not be responsible for any loss, costs, or damages incurred due to your access to or use of third-party content, products, or services.

---

# Contents

<b>Preface</b> .....	<b>1</b>
Introduction .....	1
Audience .....	1
Documentation Accessibility .....	1
List of Topics .....	1
Related Documents .....	1
<b>Core Maintenance</b> .....	<b>2</b>
Treasury Bank Parameters Maintenance .....	3
Treasury Branch Parameters Maintenance .....	4
Period Code Maintenance .....	7
Maintain Mandatory Information .....	10
Process Customer Classification Maintenance .....	14
Maintain Customer Spreads .....	17
Treasury Customer Spread Maintenance .....	19
Define MIS Heads .....	20
Treasury MIS Code Restriction Maintenance .....	23
Treasury Product Group Maintenance .....	24
Maintain Transaction Limits .....	25
Treasury Product Restrictions .....	27
Foreign Account Tax Compliance Act .....	31
Treasury Status Code Maintenance .....	32
Treasury Group Code Maintenance .....	33

---

Maintain Treasury Risk Category .....	35
Process Risk Percent Details .....	35
Dealer Maintenance .....	37
Treasury External Service Maintenance .....	38
Treasury Core Entity Error Queue .....	39
Notification Process .....	43
Process Notifications Enroute .....	47
Process Notification Messages .....	48
Process ECA Block Details .....	49
Process Feature .....	50
Maintain Feature ID .....	51
Bank Parameters .....	52
Floating Rates Maintenance .....	53
CD Credit Event Maintenance .....	54
List of Glossary .....	55
<b>Dashboard .....</b>	<b>57</b>
Introduction .....	57
Dashboard Super User .....	58
Treasury Authorization Dashboard .....	58
<b>Error Messages for Core Entities and Services .....</b>	<b>63</b>
Error Codes and Message .....	63
<b>Function ID - Glossary .....</b>	<b>64</b>

# 1. Preface

## 1.1 Introduction

This manual is designed to help you quickly get acquainted with the Core Services module of Oracle Banking Treasury.

This user manual is a supplement to the Common Core - Core Entities and Services User Manual and contains only specific functionalities and information related to Oracle Core Entities and Services. Hence, this document should be read in conjunction with the Common Core - Core Entities and Services User Manual from the perspective of completeness inflow and understanding.

## 1.2 Audience

This manual is intended for the following User/User Roles:

**Table 1.1: Function and Role**

Role	Function
Bank Office Clerk	Input functions for contracts
Back office managers/officers	Authorization functions
Product Managers	Product definition and authorization
End of day operators	Processing during end of day/ beginning of day
Financial Controller/Product Managers	Generation of reports

## 1.3 Documentation Accessibility

For information about Oracle's commitment to accessibility, visit the Oracle Accessibility Program website at <http://www.oracle.com/pls/topic/lookup?ctx=acc&id=docacc>.

## 1.4 List of Topics

The manual is organized as follows:

**Table 1.2: Topics**

Topics	Description
<b>Core Maintenance</b>	Explains the maintenance of various basic details about your bank

## 1.5 Related Documents

- Procedures User Manual
- Settlements User Manual
- Common Core - Entities and Services

---

## 2. Core Maintenance

As part of enabling the module Oracle Treasury, there are several maintenances to be performed. These maintenances have been elaborated upon in the sections given below. This topic contains the following sub-topics:

- 1) [\*Treasury Bank Parameters Maintenance\*](#)
- 2) [\*Treasury Branch Parameters Maintenance\*](#)
- 3) [\*Maintain Period Code\*](#)
- 4) [\*Maintain Location Details\*](#)
- 5) [\*Treasury Customer Additional Detail Maintenance\*](#)
- 6) [\*Process Customer Classification Maintenance\*](#)
- 7) [\*Process Customer Classification Maintenance\*](#)
- 8) [\*Maintain Treasury Relationship Maintenance\*](#)
- 9) [\*Maintain Customer Spreads\*](#)
- 10) [\*Treasury Customer Spread Maintenance\*](#)
- 11) [\*Treasury MIS Head Maintenance\*](#)
- 12) [\*Maintain Allowed List of MIS Codes\*](#)
- 13) [\*Treasury Product Group Maintenance\*](#)
- 14) [\*Maintain Transaction Limits\*](#)
- 15) [\*Treasury Product Restrictions\*](#)
- 16) [\*Maintain FATCA Product\*](#)
- 17) [\*Treasury Status Code Maintenance\*](#)
- 18) [\*Treasury Group Code Maintenance\*](#)
- 19) [\*Maintain Treasury Risk Category\*](#)
- 20) [\*Process Risk Percent Details\*](#)
- 21) [\*Process Treasury Dealer Maintenance\*](#)
- 22) [\*Treasury External Service Maintenance\*](#)
- 23) [\*Treasury Core Entity Error Queue\*](#)
- 24) [\*Start the Background Process\*](#)
- 25) [\*Process Notification Parameters\*](#)
- 26) [\*Process Notifications Enroute\*](#)
- 27) [\*Process Notification Messages\*](#)

- 28) [Process ECA Block Details](#)
- 29) [Process Feature](#)
- 30) [Maintain Feature ID](#)
- 31) [Process Confirmation/ Affirmation Type Maintenance](#)
- 32) [Floating Rates Maintenance](#)

## 2.1 Treasury Bank Parameters Maintenance

This topic describes the systematic instructions to maintain Bank Parameters Maintenance.

CONTEXT:

In the **Bank Core Parameters** screen, you maintain basic information about your bank such as its name, head office. The details that you maintain in this screen will be made applicable to all branches of your bank.

1. On the **Homescreen**, specify **STDTRBNK** in the text box, and click next arrow.

STEP RESULT: **Treasury Bank Parameters Maintenance** screen is displayed.

**Figure 2.1: Treasury Bank Parameters Maintenance**

2. On **Treasury Bank Parameters Maintenance** screen, specify the fields. For more information on fields,

**Table 2.1: Treasury Bank Parameters Maintenance**

Field	Description
<b>Bank Code and Bank Name</b>	Specify the bank code maintained in the Bank Core Parameters Maintenance ( <b>STDCRBK</b> ) screen.
<b>Fatca Applicable</b>	Specify the field.
<b>Discount Currency</b>	Specify the field.

## 2.2 Treasury Branch Parameters Maintenance

1. On **Homescreen**, specify **STDTRBRN** in the text box, and click next arrow.

STEP RESULT: **Treasury Branch Parameters Maintenance** screen is displayed.

**Figure 2.2: Treasury Branch Parameters Maintenance**

2. On **Treasury Branch Parameters Maintenance** screen, specify the fields.

For more information on fields, refer [Table 2.2: Treasury Branch Parameters Maintenance - Field Description](#)



**Table 2.2: Treasury Branch Parameters Maintenance - Field Description**

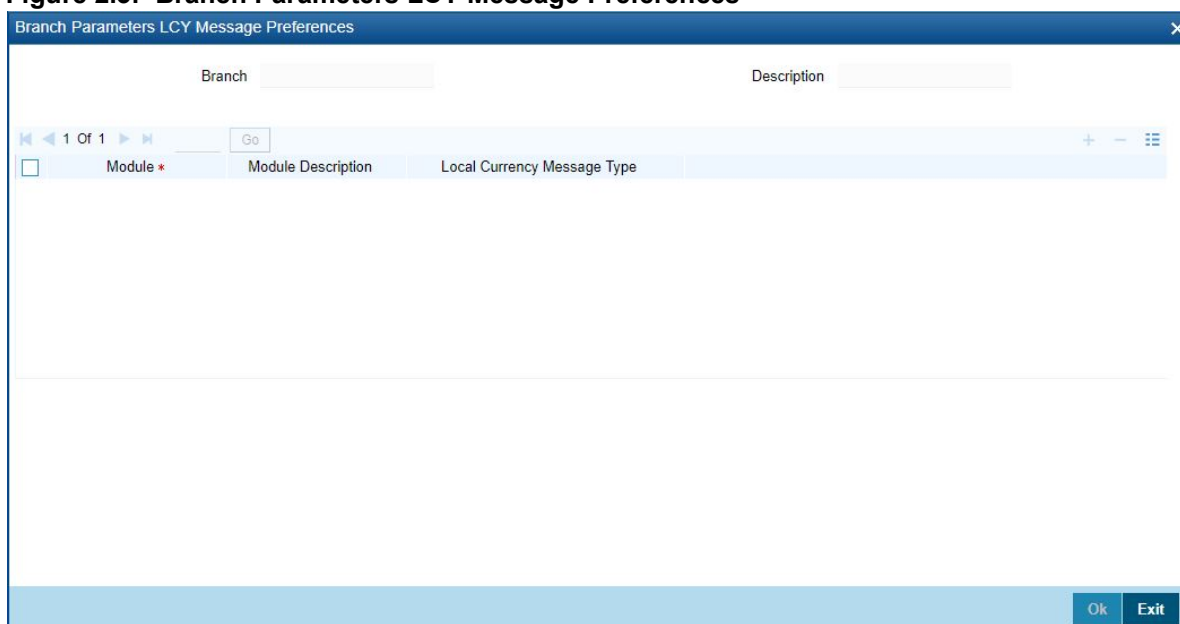
<b>Field</b>	<b>Description</b>
<b>Branch Code</b>	This is a Mandatory field Specify the branch code maintained in Branch Core Parameter Maintenance screen.
<b>Parent Branch</b>	This is the name of the office or branch, the code of which is input. Enter the name using a maximum of 35 characters, alphanumeric
<b>Customer Identity</b>	Maintain the Customer Identity of the Branch
<b>Branch Name and Description</b>	Specify the Branch name you want to specify.
<b>Preferences</b>	We can maintain the branch preference under this.
<b>Netting Suspense General Ledger</b>	The net amount of the settlement is transferred through the Nostro accounts. For instance, let us take the following two outstanding contracts entered into by bank A; both settling on January 10, 1998: Bought from bank B 1 Million USD in exchange for 35 Million INR Sold to bank B 1/2 million USD in exchange for 18 million INR The above contracts can be settled in either of the two ways given below, on the settlement date: Settle both contracts separately Net the settlements of the two contracts
<b>Internal Swap Customer</b>	Specify an internal swap customer for processing internal swaps. The names of all the customers of your bank will be displayed in the option-list provided. This will be a unique customer meant for processing internal swaps.
<b>Back Value Days</b>	If you enable the Back Value Check Required option, you must indicate the number of calendar days up to which back-valued transactions can be allowed. During transaction processing you will be allowed to post back-valued transactions up to the specified date in the past (no check will be done). Further, if the option is checked but you have not maintained the Back Value Days' (maintained as NULL), the system will interpret it to be 'Zero' days allowed (for back valued transactions). The restriction for the maximum period up to which back valued posting can be allowed, will be made on transactions processed in following modules:
<b>Payment Messages</b>	Specify the required Payment Message.
<b>Track Previous Year Profit and Loss Adjustment</b>	Specify the previous year track and loss adjustment.
<b>Rate Preferences</b>	

Field	Description
<b>Proceed with Previous available rate.</b>	By Default this field is checked In this case during EOD processing system checks for rate availability for that particular effective date in the floating rate table and if rates are not available for that date, then rate revision event is applied on contracts with the previous latest rate available in the system. When the check box is not enabled, during EOD processing, the system skips Rate fixing and revision event process on respective contracts in case when the rate for that effective date is not available. Once rates are available/uploaded in system then user has an option to execute rate-fixing process on adhoc basis.
<b>Back value Check Required</b>	Specify Back Value and required check.
<b>Default Bank Operation Code</b>	Specify the field.
<b>Pre-Settlement Cut-off Details</b>	Specify the field
<b>Cut off Time (In Minutes)</b>	Pre-settlement cut off time captures the cutoff time which is used for deciding whether the deal falls with the cut off or not in minutes. Validation is available to ensure that the value maintained in this field does not accept any decimal value or negative values.

3. On **Treasury Branch Maintenance** screen, click **LCY Message Preference**.

STEP RESULT: **Branch Parameters LCY Message Preferences** screen displays

**Figure 2.3: Branch Parameters LCY Message Preferences**



4. On **Branch Parameters LCY Message Preferences** screen, specify the fields.

**Table 2.3: Branch Parameters LCY Message Preferences - Field Description**

Filed	Description
<b>Branch and Description</b>	Specify Branch Parameter and the description.
<b>Module and Module Description</b>	Specify a Module and its equivalent description.
<b>Local Currency Message Type</b>	Click the local currency message drop-down list, to select the list of options: <ul style="list-style-type: none"> <li>• Suppress LCY</li> <li>• Generate LCY Message Through SWIFT</li> <li>• General Local Payments</li> </ul>

## 2.3 Period Code Maintenance

Banks, like all business houses compute their profits and losses and assess their financial position at the end of each financial year, which typically extends to 12 months – from January to December or from March to April. However, this could be changed, depending upon the Bank's policies and regulatory requirements. For interim reporting needs, the financial year is further divided into accounting periods, the duration of which is again determined by the bank's accounting requirements. For example, your bank's Board of Directors meets once a month therefore, you would divide the financial cycle into monthly periods. The financial year and the accounting periods are referred to in the Treasury system as the 'Financial Cycle' and the 'Financial Periods' respectively and are maintained at the bank level by your Head Office branch. At the end of each financial period and financial cycle you can generate profit and loss statement and a balance sheet. The system also offers you the flexibility of keeping a financial period/financial cycle open, allowing you to post adjustments to it and obtain a revised profit or loss statement/balance sheet. You can maintain these details in the 'Period Code Maintenance' screen.

This topic contains the following:

- 1) [Maintain Period Code](#)

### 2.3.1 Maintain Period Code

This topic describes the systematic instruction to Maintain Period Code.

1. On the Homescreen, specify **STDTRPRC** in the text box, and click next arrow.  
STEP RESULT: **Treasury Period Code Maintenance** screen is displayed.

**Figure 2.4: Treasury Period Code Maintenance**

2. On **Treasury Period Code Maintenance** screen, specify the fields. For more information on fields, refer [Table 2.4: Treasury Period Code Maintenance - Field Description](#)
- The financial cycle of your bank giving the start date and end date of each financial year.
- The period group - financial periods into which each financial cycle is to be divided.

**Table 2.4: Treasury Period Code Maintenance - Field Description**

Field	Description
<b>Financial Cycle</b>	For each financial cycle you maintain the following parameters: The field is mandatory. <b>Cycle</b> This is a code for the financial cycle. It acts as an identifier for the cycle. For example, while posting adjustments into a previous financial cycle -- you would identify the year through this code. Input the code using a maximum of 9 characters, alphanumeric. For example, the financial cycle extends from 1st April to 31st March in India. A bank here could define its code for the year 1996-97 as FY 1996-97.
<b>Description</b>	This describes the financial cycle. Enter description using a maximum of 35 characters, alphanumeric. Taking the above example, you could enter Financial Year - 1996-97.
<b>Start Date</b>	The field is mandatory. This is the first day of this Financial Cycle
<b>End Date</b>	The field is mandatory. This is the last day of this Financial Cycle

Field	Description
<b>Period Code</b>	<p>The field is mandatory.</p> <p>This code identifies the accounting period. Enter a code using a maximum of 3 characters, alphanumeric. For example, if your period length is a quarter you can enter - Q1 for the first period; Q2 for the second; Q3 for the third and so on. If your period length is a bimonthly you can enter BM1, BM2. If your period length coincides with a month you can input M1, M2.</p>
<b>Period Group</b>	<p>The financial cycle defined above, can be divided into different accounting periods. To define individual accounting periods click on the first row under period code. A period called 'FIN' is created by the system. This is an open ended period coinciding with the last day of the financial cycle (for details refer to the section 'System Functions'). You can maintain the following parameters for each accounting period within a financial cycle:</p>
<b>Start Date</b>	<p>This is the first day of the corresponding period.</p>
<b>End Date</b>	<p>The field is mandatory.</p> <p>This is the last date of the corresponding period. 'End date' of a period should always end on a month end. Please note:</p> <ul style="list-style-type: none"> <li>• The period codes could be of varying lengths but no gaps should be left between periods</li> <li>• The duration of two periods should not overlap</li> <li>• You can modify the period code of the current or a future period; however, a past period cannot be modified even if it has not been closed</li> <li>• All details maintained in the '<b>Period Code Screen</b>' will automatically apply to any new branch opened by you in the Branch Parameters Screen</li> <li>• The current financial cycle code and the current period code are displayed in the 'Branch Parameters Screen'</li> </ul>

## 2.4 Maintain Mandatory Information

As part of capturing customer related information in Treasury you need to maintain Customer Information Files (CIF records) for each entity who is a customer of your bank. Apart from creating CIF records for each entity you need to maintain certain mandatory information. These details have been discussed in the preceding sections.

This topic contains following:

- 1) [Maintain Location Details](#)

### 2.4.1 Maintain Location Details

This topic describes the instructions to maintain location details.

1. On the Homescreen, specify **STDTRLOC** in the text box, and click next arrow.

STEP RESULT: **Treasury Location Maintenance** screen is displayed.

**Figure 2.5: Treasury Location Maintenance**

Fields						
Maker	Date Time:	Mod No	Record Status			
Checker	Date Time:		Authorization Status	Exit		

2. On **Treasury Location Maintenance** screen, specify the fields.

For more information on fields, refer to [Table 2.5: Treasury Location Maintenance - Field Description](#)

**Table 2.5: Treasury Location Maintenance - Field Description**

Field	Description
<b>Location</b>	<p>Specify the fields. This field is mandatory. You can capture a unique three-character code to identify the locality where the customer resides.</p> <p><b>NOTE:</b> While maintaining customer information details and associating a location code with a Customer and Country Code combination, a list of all the valid location codes you have maintained in this screen will be available in the option list for the Location Code field. You can select the appropriate code.</p> <p>The fields is mandatory.</p>

Field	Description
Description	<p>You can also associate a brief description with the location code. This description is for information purposes only and will not be printed on any customer correspondence.</p> <p><b>NOTE:</b> While maintaining the Customer Short Name in the 'CIF Details' screen the system automatically appends the Location code to the customer short name when you associate the appropriate Location Code with the Customer Code.</p>

## 2.4.2 Treasury Customer Additional Detail Maintenance

This topic describes the instructions to process Maintenance screen.

1. On **Homescreen**, specify **STDTRCIF** in the text box, and click next arrow.

STEP RESULT: **Treasury Customer Additional Detail Maintenance** screen displays.

**Figure 2.6: Treasury Customer Additional Details Maintenance**

2. On **Treasury Customer Maintenance** screen, specify the fields.

For more information on fields, refer to [Table 2.6: Treasury Customer Additional Detail Maintenance - Field Description](#)

**Table 2.6: Treasury Customer Additional Detail Maintenance - Field Description**

<b>Field</b>	<b>Description</b>
<b>Customer No</b>	Specify a customer code for the customer. The customer code is assigned to identify a customer. It is also referred to as the customer CIF Number. This code should be unique across branches. It can be 9-characters long For example, Assign a code using a maximum of 9 characters, alphanumeric. For example, assume your customer is DOW Corporation, US. You can assign him a code, which could either, be a number representing the customer's serial number or an alphabetic code like DowCorp or an alphanumeric code like Dow1000US or DowUS1000 / 1000DowUS, if he is the 1000th customer to approach your bank. The field is mandatory.
<b>Customer Name</b>	Indicates the name of the Customer.
<b>Customer Category</b>	The field is mandatory. Specify the Customer Category.
<b>Front Office Short Name</b>	Specify the Front Office Short Name
<b>Front Office Long Name</b>	Specify Front Office Long Name
<b>Settlement Parameters</b>	Specify the fields.
<b>CLS Participants</b>	Customers of your bank can settle their FX deals via the CLS (Continuous Linked Settlements) Bank to reduce the risks associated with such transactions. To allow the customers to do CLS trades, you have to mark the customer as a 'CLS Participant'. However, you have to ensure that the branch at which the customer operates is also qualified to process CLS deals i.e. the branch should also be marked as a CLS Participant before allowing the same for the customer. Further, you can also capture currency restrictions for your customers by maintaining a list of allowed or disallowed currencies for CLS trading. Click the 'CLS Restrictions' button to maintain this list. Note that currency restrictions will be allowed only for customers who are CLS participants. Refer the 'Continuous Linked Settlements' chapter of the Foreign Exchange User Manual for details on maintaining currency restrictions and other maintenances required for processing CLS deals in Oracle Treasury.
<b>Credit Check Parameters</b>	Specify the fields.
<b>Credit Check Required</b>	Specify the fields.
<b>Multiple Swift Confirmation Parameters</b>	
<b>Fund Type Customer</b>	For cases, when the counter-party to a trade is a Fund, Oracle Banking Treasury management allows to generate multiple confirmations to custodian and settlement member associated with that fund. Populating of specific tag for MT 320 and MT 300 with fund details is also supported for such cases. If the Customer is to be identified as the Fund type Customer, select the check box.
<b>Custodian BIC Code</b>	Specify Custodian BIC Code.



Field	Description
<b>Settlement Member BIC Code</b>	Specify Settlement Member BIC Code.
<b>Generate Confirmation Message to</b>	Select any of the following check box to whom the confirmation message has to be generated. <ul style="list-style-type: none"> <li>• Custodian Only</li> <li>• Settlement Member Only</li> <li>• Both Custodian and Settlement member</li> </ul>

- On **Treasury Customer Maintenance** screen, click **Additional**.  
STEP RESULT: **Treasury Customer Maintenance** screen with the **Additional** tab details is displayed.

**Figure 2.7: Treasury Customer Maintenance - Additional Tab**

- On the **Treasury Customer Maintenance - Additional Tab** screen, specify the fields.  
For more information on fields, refer [Table 2.7: Additional Tab - Field Description](#)

**Table 2.7: Additional Tab - Field Description**

Field	Description
<b>Customer No</b>	Specify a customer code for the customer. Thee customer code is assigned to identify a customer. It is also referred to as the customer CIF Number. This code should be unique across branches. The field is Mandatory.
<b>Customer Name</b>	Specify the Customer Name.

Field	Description
<b>Customer Category</b>	Specify the customer category. The option list displays the values maintained in Customer Categories Maintenance. Choose the appropriate one.  <b>NOTE:</b> You need to capture the basic details for each customer, regardless of the type of customer you are maintaining. The field is Mandatory.
<b>Additional Parameters</b>	
<b>Customer/Bank Flag</b>	Select the Customer/Bank Flag from the drop-down field.
<b>Charge Details</b>	Select the Charge Details from the drop-down list
<b>Confirmation/Affirmation</b>	Specify the field.
<b>Fiduciary</b>	Select this check box to Identify the Customer as a Fiduciary
<b>Misc Details</b>	
<b>Tax Group</b>	specify the tax group of the customer from the option list provided. Only the Group Codes maintained with type Tax will appear for selection.
<b>Charge Group</b>	Specify the charge group of the customer from the option list provided. Only the Group codes maintained with type Charge will appear for selection.
<b>FX Netting Customer</b>	Specify the field.
<b>Risk Category</b>	Specify the risk category field.
<b>Risk Profile</b>	Specify the risk profile from the adjoining option list.
<b>Locater Currency</b>	Specify the field.
<b>Restriction Details</b>	
<b>Restricted Note</b>	Specify the Restricted Note
<b>Effective Date</b>	Specify the Effective Date.

## 2.5 Process Customer Classification Maintenance

This topic describes about the systematic instructions to process customer classification maintenance.

1. On Homescreen, specify **STDTRCCM** in the text-box, and click next arrow.

**STEP RESULT:** **Treasury Customer Classification Maintenance** screen displays.

**Figure 2.8: Treasury Customer Classification Maintenance**

2. On **Treasury Customer Classification Maintenance** screen, specify the fields. For more information on fields, refer [Table 2.8: Treasury Customer Classification Maintenance - Field Description](#)

**Table 2.8: Treasury Customer Classification Maintenance - Field Description**

Field	Description
<b>Customer Classification</b>	When you specify CIF details for a customer in the Customer Information Maintenance screen, you can also specify the appropriate classification for the customer.
<b>Description</b>	Enter a description for the classification.

### 2.5.1 Maintain Address Code

This topic describes the systematic instructions to Maintain Address Code.

1. On **Homescreen**, specify **STDTRADM** in the text box, and click next arrow.  
STEP RESULT: **Treasury Address Code Maintenance** screen is displayed.

**Figure 2.9: Treasury Address Code Maintenance**

- On **Treasury Address Code Maintenance** screen, specify the fields.  
For more information on fields, refer to [Table 2.9: Treasury Address Code Maintenance](#)

**Table 2.9: Treasury Address Code Maintenance**

Field	Description
<b>Address Code</b>	This Field is Mandatory. Specify the address code from the adjoining option list.
<b>Address Line 1 - 4</b>	Specify the mailing address of the customer.
<b>Pin-code</b>	Specify pin code of the mailing address specified.
<b>Country</b>	Specify the country as given in the address of correspondence of the customer. You can select the appropriate country from the adjoining option list.

## 2.5.2 Maintain Treasury Relationship Maintenance

This topic describes the systematic instructions to maintain type of relation.

PREREQUISITE:

Specify **User Id** and **Password**, and login to **Homescreen**.

- On Homescreen, specify **CSDTRREM** in the text box, and click next arrow.

STEP RESULT: **Treasury Relationship Maintenance** screen is displayed.

**Figure 2.10: Treasury Relationship Maintenance**

2. On **Treasury Relationship Maintenance** screen, specify the fields.  
For more information on fields, refer to [Table 2.10: Treasury Relationship Maintenance - Field Description](#)

**Table 2.10: Treasury Relationship Maintenance - Field Description**

Field	Description
<b>Relationship</b>	Define the type of relationship in this field. You can use a maximum of 20 alphanumeric characters to define a relationship
<b>Category</b>	Select the category from the drop down list to define the nature of the relationship with the customer. The available options are: <ul style="list-style-type: none"> <li>• Customer to Customer</li> <li>• Customer to Account</li> <li>• Customer to Contract</li> </ul>
<b>Description</b>	Provide a brief description of the relationship being maintained. This will further help you in identifying the relationship. You can enter a maximum of 35 alphanumeric characters in this field.
The types of relationships defined in this screen is made available for linking two customers, only upon authorization of the details maintained.	

## 2.6 Maintain Customer Spreads

This topic describes the systematic instructions to maintain customer spreads.

PREREQUISITE:

Specify **User Id** and **Password**, and login to **Homescreen**.

1. On Homescreen, specify **CYDTRCSP** in the text box, and click next arrow.

STEP RESULT: **Treasury Customer Currency Spread Maintenance** screen is displayed.

**Figure 2.11: Treasury Customer Currency Spread Maintenance**

2. On **Treasury Customer Currency Spread Maintenance** screen, specify the fields. In this screen, for a customer and currency pair, you can maintain buy and sell spreads for different tenors. You need to maintain customer spreads in each branch. Transactions initiated in a branch will pick up the spread(s) maintained for that branch.

**Table 2.11: Treasury Customer Currency Spread Maintenance - Field Description**

Field	Description
<b>Branch Code</b>	Specify the field
<b>Currency Code 1, 2</b>	Specify the field. The field is mandatory
<b>Spread Definition</b>	Specify the field.
<b>Specify Spread Details</b>	When processing an FX deal involving a customer (for whom you have maintained spread details), the system picks up the customer spread corresponding to the tenor of the deal and builds it into the exchange rate. If spread details are unavailable for a specific tenor, the system picks up the spread defined for the nearest lower tenor. For example, assume for a customer and currency pair you maintain spread details for the following tenors: '3', '5', and '10' days. When processing a deal with a tenor of '4' days (involving the customer and the currency pair), the system picks up the spread details defined for a tenor of three days. This is because spread details for a '4' day tenor is unavailable for the customer and currency pair. <b>NOTE:</b> You can also maintain customer spreads for the wildcard entry – ALL. If spread details for a specific counterparty (for the currency pair) are unavailable, the System looks for the customer spread maintained for the wildcard ALL entry. If even that is not available, then the customer spread defaults to zero.

Field	Description
<b>Computing Buy and Sell Spreads</b>	<p>Using percentage system -- suppose the bank wants to make a profit of 5% over and above the mid rate quoted. Suppose the dealing currencies are USD and AUD. 1USD = 1.4166 AUD for Standard rate type. (Mid rate being 1.4166). Now to arrive at the spread the bank will use the following formula:</p> $\text{Spread} = 5 / 100 \times \text{Mid rate (1.4166)} = 0.07083$ <p>Using the points system -- suppose the point quoted by the bank is 708.3. The points multiplier in this case would be 0.0001 (depends on the decimal points that the mid rate extends to. Usually it is 4 decimal places).</p> $\text{Spread} = \text{Points (708.3)} \times \text{Points Multiplier (0.0001)}$ <p>Now coming to the buy and sale rate computing, there are two ways of computing the buy and sale rates -- Direct and Indirect. Depending upon the quotation method you have specified in the Currency pair screen, the system computes the spreads.</p> <p>In the Direct method, the buy and sell rates are calculated as follows:</p> $\text{Buy Rate} = \text{Mid-Rate} - \text{Buy Spread}$ $\text{Sell Rate} = \text{Mid-Rate} + \text{Sell Spread}$ <p>For cross currency contracts, the rate for the currency pair is:</p> $1 \text{ unit of Ccy 1} = \text{Rate} * 1 \text{ unit of Ccy 2}$ <p>In the Indirect method, the buy and sell rates are calculated as follows:</p> $\text{Buy Rate} = \text{Mid-Rate} + \text{Buy Spread}$ $\text{Sell Rate} = \text{Mid-Rate} - \text{Sell Spread}$ <p>For cross currency contracts, the rate for the currency pair is:</p> $1 \text{ unit of Ccy 2} = \text{Rate} * 1 \text{ unit of Ccy 1}$ <p>The method of spread definition – percentage or points – that you have maintained for the currency pair is displayed on this screen.</p>

## 2.7 Treasury Customer Spread Maintenance

This topic describes the systematic instructions to maintain customer spread.

### CONTEXT:

For each customer of your bank you can define buy and sell margins for a specific currency. This spread is applied to floating interest components that involve the customer and currency combination. The margin that you define is appropriately picked up and applied to arrive at the final rate that is applied to floating components of contracts that involve the customer - currency combination. The buy and sell margins that you define are for a customer and currency combination. You can select the customer and currency combination from the option lists available. For the selected currency – customer combination, you can define amount slabs and specify a Borrow and Lend margin for each slab. To add a slab to the list click add icon and enter the slab details. To remove a slab from the list, highlight it and click delete icon. Whenever you enter a contract in Treasury that involves the customer and currency combination, the appropriate spread is applied to arrive at the floating rate to be charged. The slab is selected based on the contract amount and depending on the nature of the contract, the Borrow or Lend spread is applied.

1. On Homescreen, specify **CFDTRCSM** in the text box, and click next arrow.

STEP RESULT: **Treasury Customer Spread Maintenance** screen is displayed.

**Figure 2.12: Treasury Customer Spread Maintenance**

- On **Treasury Customer Spread Maintenance** screen, specify the fields.  
For more information on fields, refer to [2.7 Treasury Customer Spread Maintenance](#)

**Table 2.12: Treasury Customer Spread Maintenance**

Field	Description
<b>Customer</b>	Specify the fields. The field is mandatory.
<b>Currency</b>	Specify the fields. The field is mandatory.
<b>Amount Stats</b>	Click the Amount Stats check box,.
<b>Spreads</b>	Specify the field
<b>Borrow/Lend</b>	Select the check box Borrow or Land, as per the requirement.

## 2.8 Define MIS Heads

Each accounting entry that is generated can be linked to an MIS Head. An MIS Head indicates the manner in which the type of entry should be considered for profitability reporting purposes.

This chapter contains the following:

- [1\) Treasury MIS Head Maintenance](#)

### 2.8.1 Treasury MIS Head Maintenance

This topic describes the systematic instructions to maintain Head maintenance.

- On Homescreen, specify **MIDTRHED** in the text box, and click next arrow.  
STEP RESULT: **Treasury MIS Head Maintenance** screen displays.



**Figure 2.13: Treasury MIS Head Maintenance**

2. On **Treasury MIS Head Maintenance** screen, specify the fields. If you are calling an MIS Head that has already been defined, double-click an MIS Head from the summary screen.

For more information on fields, refer to [Table 2.13: Treasury MIS Head Maintenance](#)

**Table 2.13: Treasury MIS Head Maintenance**

Field	Description
<b>Head</b>	The field is mandatory. Specify the fields.
<b>Description</b>	Specify the description.

Field	Description
<b>Category</b>	<p>The field is Mandatory.</p> <p>The MIS Head Category classification indicates the method in which the accounting entry will be reported in the profitability report. It could be one of the following:</p> <ul style="list-style-type: none"> <li>• Balance</li> <li>• Income</li> <li>• Expense</li> <li>• Contingent</li> </ul> <p><b>Balance</b> Indicates that the accounting entry should be considered for calculating the Cumulative Average Balance. Typically, an asset entry would be classified under the balance type MIS Head. The GL entry leg of a loan disbursement transaction, would typically be classified under a Balance type of MIS Head.</p> <p><b>Income</b> Indicates that the accounting entry should be considered as an income for the purpose of profitability reporting. Clearly, any interest or charge income would be classified under an Income type of MIS Head.</p> <p><b>Expense</b> Indicates that the accounting entry should be considered as an expense for the purpose of profitability reporting. Any interest, or tax expense would be classified under an expense type of MIS Head.</p> <p><b>Contingent</b> Indicates that the accounting entry should be considered as a contingent entry for the purpose of profitability reporting. The issue of an import Letter of Credit, etc., are examples of contingent type of entries. You can generate a report that gives the balances due to such contingent type of entries. Under each type of MIS Head, you may define additional MIS Heads, as per your reporting requirement. For example, you can have an MIS Head for each loan product, so that you can have the cumulative average balance due to all the loans disbursed under the product.</p>
<b>Refinance</b>	<p>The 'Refinance' option is provided for marking MIS Heads for refinancing. For MIS Heads that are marked for refinancing, the refinancing income or expense would be calculated, on the cumulative average balance, for the reporting period. You would typically mark a balance type of MIS Head for refinancing. This option is provided because not all the balance type of entries would come under the umbrella of refinancing. To enable this option select the check box beside 'Refinance'.</p>

## 2.9 Treasury MIS Code Restriction Maintenance

You can maintain Treasury MIS Code restriction maintenance for MIS Class, Product or Account Class, and Branch. This section contains the following topic:

- 1) [Maintain Allowed List of MIS Codes](#)

### 2.9.1 Maintain Allowed List of MIS Codes

This topic describes the systematic instructions to maintain allowed list of MIS Codes.

CONTEXT:

You can maintain a list of allowed MIS codes for a given MIS class, product or account class combination for a branch in the 'MIS Code Allowed For MIS Class and Product/Account Class' screen. The MIS call forms would pick only the MIS codes that are allowed for the product or account class and MIS class combination.

1. On Homescreen, specify **MIDTRPRD** in the text box, and click next arrow.

STEP RESULT: **Treasury MIS Code Restriction Maintenance** screen is displayed.

**Figure 2.14: Treasury MIS Code Restriction Maintenance**

2. On **Treasury MIS Code Restriction Maintenance** screen, specify the fields.

For more information on fields, refer [Table 2.14: Treasury MIS Code Restriction Maintenance](#) (p. 23)

**Table 2.14: Treasury MIS Code Restriction Maintenance**

Field	Description
<b>Branch Code</b>	The field is Mandatory. Specify the branch code. Alternatively, you can select the branch code from the option list. The list displays all the branch code for which the MIS code restrictions are maintained.
<b>Branch Name</b>	The system displays the name of the branch maintained in the system.

Field	Description
<b>MIS Class</b>	The field is Mandatory. Specify the MIS class for which the allowed list of MIS codes are maintained. Alternatively, you can select the class code from the option list. The list displays all the MIS classes maintained in the system. The customer MIS classes are not part of the list.
<b>MIS Class Description</b>	The system displays the MIS class description maintained in the system.
<b>Product Code</b>	The field is Mandatory. Specify the product code for which the allowed lists are maintained. Alternatively, you can select the code from the option list. The list displays all the products or account class code maintained in the system.
<b>Product Description</b>	The system displays the product or account class description respectively maintained in the system.
<b>MIS Code</b>	Specify the MIS code maintained. Alternatively, you can select the MIS code from the option list. The list displays all the MIS codes maintained in the system.
<b>MIS Code Description</b>	The system displays the MIS code description maintained in the system.
<b>Allowed</b>	Check this box to allow the MIS code for a given MIS class, product or account class combination for a branch.  <b>NOTE:</b> The MIS call forms attached to a transaction input or an account creation screen populates the MIS codes that are allowed for a given MIS class, product or account class combination for a branch. If you do not perform maintenance for a given branch, account class/product code and MIS class combination, then all MIS Classes linked to the account class/product code will be available.

## 2.10 Treasury Product Group Maintenance

This topic describes the systematic instruction to maintain product groups.

1. On the Homescreen, specify **STDTRPRG** in the text box, and click next arrow.  
STEP RESULT: **Treasury Product Group Maintenance** screen is displayed.

**Figure 2.15: Treasury Product Group Maintenance**

- On **Treasury Product Group Maintenance** screen, specify the fields.  
For more information on fields, refer [Table 2.15: Treasury Product Group Maintenance](#) (p. 25)

**Table 2.15: Treasury Product Group Maintenance**

Field	Description
<b>Group ID</b>	Specify a group ID for the product group that you are defining The field is Mandatory.
<b>Description</b>	Enter a brief description of the product group that you are defining

## 2.11 Maintain Transaction Limits

This topic describes the systematic instructions to maintain transaction limits.

### CONTEXT:

Every time a transaction entered in Oracle Treasury exceeds a certain limit in a specified currency, an override is automatically generated. This feature is referred to as the Currency-wise Transaction Limits facility. Only a user with dual authorization rights (a user other than the one who authorized the transaction which led to this override) will be allowed to authorize the override.

- On Homescreen, specify **CSDTRPLM** in the text box, and click next arrow.

STEP RESULT: **Treasury Product Transaction Limit Maintenance** screen

**Figure 2.16: Treasury Product Transaction Limit Maintenance**

2. On **Treasury Product Transaction** screen, specify the fields.

For more information on fields, refer [Table 2.16: Treasury Product Transaction - Field Description](#)

To maintain details of a new currency-wise transaction limit for a specific module and product combination, click the 'New' button on the Application toolbar. The Product Transaction Limit screen will be displayed without any details. Every record that you create will be processed in Oracle Treasury only after it is authorized. A user bearing a different Login ID can authorize the record that you have created.

**Table 2.16: Treasury Product Transaction - Field Description**

Field	Description
<b>Module and Product</b>	<p>Every module in Oracle Treasury is identified by a code. First, you have to identify the module for which the currency-wise transaction limit is to be maintained. A list of all the modules of Oracle Treasury operational at your bank will be displayed in the available list. Choose the appropriate module code. The description associated with the module will be defaulted in the adjacent field. Each module contains a number of products within it. After you identify the module, indicate the product within the module for which you would like to maintain a currency-wise transactional limit.</p> <p><b>NOTE:</b> Since, we do not define products for Journal Entry transactions, if you are maintaining currency-wise transaction limits for the Journal Entry transactions, your entries in the respective fields should be as follows:</p>

Field	Description
<b>Transaction Amount Limit and the Limit Currency</b>	The transaction limit currency is the currency for which you would like to maintain the amount limit. Every time you process a transaction in the specified Module-Product Code-Currency combination, the system checks whether the transaction exceeds the defined amount limit. If a transaction exceeds the amount limit, the system displays an override message while saving the transaction. Since overrides and transactions are authorized separately, authorization has to be handled by a user with dual authorization rights.
<b>Module Identification</b>	Specify the fields. The field is Mandatory.
<b>Product Code and Description</b>	Specify the Product Code and description.
<b>Source Code</b>	Specify the source code.
<b>Transaction Limit Currency</b>	Specify the Transaction Limit Currency.
<b>Customer Type</b>	Select the Customer Type.
<b>Customer Group</b>	Select the Customer Group from the drop-down list.

## 2.12 Treasury Product Restrictions

This topic describes the systematic instructions to maintain product restrictions.

PREREQUISITE:

Specify **User Id** and **Password**, and login to **Homescreen**.

1. On Homescreen, specify **CSDTRPDR** in the text box, and click next arrow.

STEP RESULT: **Treasury Product Restrictions** screen is displayed.

**Figure 2.17: Treasury Product Restrictions**

The screenshot displays the 'Treasury Product Restriction' application window. At the top, there are 'New' and 'Enter Query' buttons. The main form area includes:

- Product Code \***: A required text input field.
- Product Description**: A text input field.
- Branch Restriction** and **Customer Restriction**: Two tabs, with 'Branch Restriction' currently selected.
- Branch Restriction List**: A dropdown menu.
- Currency Restriction List**: A dropdown menu set to 'Disallowed'.
- Class Code**: A text input field with a 'Default From Class' button next to it.
- Description**: A text input field.

Below the form are two data grids:

- Branch**: A table with columns 'Branch Code' and 'Branch Name'. It shows '1 Of 1' records.
- Currency**: A table with columns 'Currency Code' and 'Currency Name'. It shows '1 Of 1' records.

At the bottom, there is a 'Change Log' section with the following fields:

Maker	Date Time:	Mod No	Record Status
Checker	Date Time:		Authorization Status

An 'Exit' button is located in the bottom right corner of the window.

- On **Treasury Product Restriction** screen, specify the fields.  
For more information on fields, refer to [Table 2.17: Treasury Product Restriction - Field Description](#)



**Table 2.17: Treasury Product Restriction - Field Description**

Field	Description
<b>Product Code</b>	The field is Mandatory. Specify the product code. Alternatively, you can select the product code from the option list. The list displays all valid product codes maintained in the system.
<b>Product Description</b>	The system displays the product description based on the product code selected.
<b>Branch Restriction List</b>	The system displays the branch list as Allowed or Disallowed based on the maintenance in the corresponding Product definition screen.
<b>Class Code</b>	Specify the class code. Alternatively, you can select the class code from the option list. The list displays all valid options based on the restrictions maintained.
<b>Description</b>	The system displays the description.
<b>Branch Code</b>	Specify the branch code. Alternatively, you can select the branch code from the option list. The list displays all valid branch codes maintained in the system.
<b>Branch Name</b>	The system displays the branch name based on the branch code selected.
<b>Currency Restrictions List</b>	The system displays the currency restrictions as Allowed or Disallowed based on the maintenance in the corresponding Product definition screen.
<b>Currency Code</b>	Specify the currency code. Alternatively, you can select the currency code from the option list. The list displays all valid codes maintained in the system.
<b>Currency Name</b>	The system displays the currency name based on the currency code selected.

3. On **Treasury Product Restriction**, click **Customer Restriction**.

STEP RESULT: **Customer Restriction** tab is displayed.

**Figure 2.18: Customer Restriction**

4. On **Customer Restriction** tab, specify the fields.

For more information on fields, refer to [Table 2.18: Customer Restriction - Field Description](#)

**Table 2.18: Customer Restriction - Field Description**

Field	Description
<b>Categories Restriction List</b>	The system displays the categories list based on the maintenance in the corresponding product screen.
<b>Class Code</b>	Specify the class code. Alternatively, you can select the class code from the option list. The list displays all valid options based on the restrictions maintained.
<b>Description</b>	The system displays the description.
<b>Customer Category Code</b>	Specify the code. Alternatively, you can select the code from the option list. The list displays all valid options maintained in the system.
<b>Description</b>	The system displays the description based on the code selected.
<b>Customer ID</b>	Specify the customer ID. Alternatively, you can select the customer ID from the option list. The list displays all valid customer IDs maintained in the system.
<b>Customer Name</b>	The system displays the customer name.
<b>Restriction Type</b>	You can select the restriction type as 'Allowed' or 'Disallowed'. If a customer category restriction is maintained as 'Disallowed' and if one of the customer in that disallowed customer category has restriction type maintained as 'Allowed', then the system considers individual customer's restriction type for further processing. This is applicable vice-versa also. Click 'Change Log' button to view the details of values that are modified.

## 2.13 Foreign Account Tax Compliance Act

FATCA is the acronym for Foreign Account Tax Compliance Act enacted by the US Government as part of the Hiring Incentives to Restore Employment (HIRE) Act, in 2010. The purpose of FATCA is to help Internal Revenue Service (IRS) to identify and collect tax from US Persons (USP) holding financial assets outside US. This chapter deals with Foreign Account Tax Compliance regulation. It includes the description about functions that would help Oracle Treasury to support FATCA. This topic contains the following sub-topic:

### 1) [Maintain FATCA Product](#)

#### 2.13.1 Maintain FATCA Product

This topic describes the systematic instructions to maintain FATCA product.

PREREQUISITE:

Specify **User Id** and **Password**, and login to **Homescreen**.

1. On Homescreen, specify **STDTRFPM** in the text box, and click next arrow.

STEP RESULT: **Treasury FATCA - Products and Instruments** screen is displayed.

**Figure 2.19: Treasury FATCA - Products and Instruments**

2. On **Treasury FATCA -Products and Instruments** screen, specify the fields.

For more information on fields, refer [Table 2.19: Treasury FATCA -Products and Instruments](#)

**Table 2.19: Treasury FATCA -Products and Instruments**

Field	Description
<b>Module Code</b>	Specify the module code for the product or account class. You can also select the valid module code from the adjoining option list.
<b>Product Code</b>	Specify the product, account class or instrument code. You can also select the valid product code from the adjoining option list.
<b>Product Description</b>	The system displays the description for the selected product code.

Field	Description
<b>Type</b>	Select the type of the product from the drop-down list. Following are the options available in the drop-down list: <ul style="list-style-type: none"> <li>• Product</li> <li>• Account Class</li> <li>• Instrument</li> </ul>
<b>Incl. Bal.</b>	Check this box if the balance of the contract account should be included for FATCA.
<b>Allow Grandfathering</b>	Check this box if the grandfathering of contracts booked using the product/account class/instrument is allowed. Grandfathered obligations needs to be checked based on the 'Allow Grandfathering' field at the 'FATCA - Product, Account Classes and Instruments' screen. The obligation is grandfathered if Account Opening Date is less than Grandfathered cutoff date and there are no changes in tenor, amount or rate of interest after grandfathered cutoff date. While authorizing, if customer is a reportable FATCA status or is recalcitrant, the system will identify all accounts, contracts and deals for the customer booked using products, account classes or instruments. For each of the customer the total FATCA balance should be updated in the threshold currency maintained for that type of customer. The FATCA balance of the customer will be the sum total of all balances of the customer obligations. If the maintenance is being modified, then at the time of authorization of the maintenance, the system will perform the following: If the maintenance is being modified, then at the time of authorization of the maintenance, the system will perform the following: <ul style="list-style-type: none"> <li>• If a product, account class or instrument is being removed from the list then all accounts, contracts or deals booked using the product, account class or instrument should be removed from the tracking table</li> <li>• The customer balance should be updated accordingly.</li> </ul> If a new product, account class or instrument is being added to the list, then at the time of authorization of the maintenance, the system should scan for all contracts, accounts or deals booked using the newly added product, account class or instrument with 'Incl. Bal.' field checked. If the counterparty of such a contract, account or deal has a reportable FATCA status, a row should be inserted into the FATCA tracking table.

## 2.14 Treasury Status Code Maintenance

This topic describes the systematic instructions to maintain status code.

1. On Homescreen, specify **STDTRSCD** in the text box, and click next arrow.

STEP RESULT: **Treasury Status Code Maintenance** screen is displays.

Figure 2.20: Treasury Status Code Maintenance

Treasury Status Code Maintenance

New Enter Query

Status Code \* \_\_\_\_\_

Description \_\_\_\_\_

Status Sequence \* \_\_\_\_\_

Fields

Maker	Date Time:	Mod No	Record Status
Checker	Date Time:		Authorization Status

Exit

2. On **Treasury Status Code Maintenance** screen, specify the fields.

For more information on fields, refer to

- A unique code for the status
- A brief description for the status
- A sequence number for the status
- The type of status – Indicate whether the status codes are maintained for an 'Account' or for a 'Contract', or for 'Both'

The type of status you choose depends on the status processing basis for your branch, which is defined in the Branch Parameters Preferences maintenance. If status processing basis is at individual account / contract level, you can choose the applicable status types as 'Account' or 'Contract'. The status codes that have been maintained of type 'Account' are available for association in the Account maintenance and those maintained with type 'Contract' can be associated with contracts. If status processing basis is at Group / CIF level, you can only maintain status codes of type 'Both' (that is, applicable for both accounts and contracts). In such a case, you must associate the statuses at both the Account maintenance as well as for contracts.

**NOTE:** It is mandatory to maintain the status code 'NORM' (Normal) with the sequence number as '0', for all the status types. The sequence number must not be repeated for a status type. The sequence number associated with the status will be used for determining the hierarchy of statuses, i.e., higher the number, worst the status and this will be unique for the status codes.

## 2.15 Treasury Group Code Maintenance

This topic describes the systematic instructions to maintain Group Code.

1. On the Homescreen, specify **STDTRGCM** in the text box, and click next arrow.

STEP RESULT: **Treasury Group Code Maintenance** screen is displays.

**Figure 2.21: Treasury Group Code Maintenance**

2. On **Treasury Group Code Maintenance** screen, specify the fields.

Each group code that you define is associated with an appropriate exposure category that must be used to track exposure due to loans issued to customers in the group, as well as customer accounts with outstanding overdrafts. The exposure category for a group is either derived from the logic maintained in the Exposure Type Category Linkage maintenance for the group type, or explicitly specified. If it is derived, it is displayed in this screen, by the End of Day batch program. The type of the group indicates the type of customers that belong to the group – retail, corporate, Charge Clearing or Tax. If no logic has been maintained in the Exposure Type Category Linkage for the group type, you can indicate the applicable exposure category for the group.

**Table 2.20: Treasury Group Code Maintenance - Field Description**

Field	Description
<b>Group Code</b>	When you maintain CIF details for customers, in the Customer Information Maintenance screen, you can specify the customer group to which the customer belongs, for provisioning and status processing. You must specify a group code defined for a group type that is the same as the customer type, for instance, if the customer is a retail customer, you must specify a group defined for retail customers. The field is mandatory.
<b>Description</b>	Specify the description
<b>Since</b>	Specify the field.
<b>Group Type</b>	Select the Group Type check box, as per the requirements.

## 2.16 Maintain Treasury Risk Category

This topic describes the systematic instruction to maintain risk category for Customers.

PREREQUISITE:

Specify **User Id** and **Password**, and login to **Homescreen**.

1. On Homescreen, specify **STDTRKRM** in the text box, and click next arrow.

STEP RESULT: **Treasury Risk Category Maintenance** screen displays.

**Figure 2.22: Treasury Risk Category Maintenance**

2. On **Treasury Risk Category Maintenance** screen, specify the fields.

For more information on fields, refer

**Table 2.21: Treasury Risk Category Maintenance**

Field	Description
Risk Category	Define the type of Risk Category in this field
Description	Provide a brief description of the Risk Category being maintained
<p>The types of Risk Categories defined in this screen will be available for Liability maintenance of customers and Risk percent maintenance, only upon authorization of the details maintained.</p> <p><b>NOTE:</b> Risk Category is not a mandatory input during Customer Maintenance. Risk Category is applicable to the Customer and not to the Customer's Liability ID.</p>	

## 2.17 Process Risk Percent Details

This topic describes the systematic instruction to process Risk Percent Details.

CONTEXT:

For FX, Derivatives and Option products you can track the risk weighted amount by attaching a risk percent to it. To track risk-weighted amount, risk category are maintained through the Limits sub screen of the Customer Mainte-

nance screen. You can capture the Risk percent details for a combination of Risk Category, Module and Product Code for a tenor range in the Risk Percent Maintenance screen.

1. On Homescreen, specify **CSDTRRPM** in the text box, and click next arrow.

STEP RESULT: **Treasury Limits Risk Percentage Maintenance** screen is displayed.

**Figure 2.23: Treasury Limits Risk Percentage Maintenance**

2. On **Treasury Limits Risk Percentage Maintenance** screen, specify the fields.

For more information on fields, refer [Table 2.22: Treasury Limits Risk Percentage Maintenance - Field Description](#)

**Table 2.22: Treasury Limits Risk Percentage Maintenance - Field Description**

Field	Description
<b>Risk Category</b>	Select the Risk Category for which you are defining the risk percent from the option list provided. The list displays all open and authorized Risk categories.
<b>Module</b>	Select the module for which you are defining the risk percent from the option list provided. The list will display only FX, DV and OT modules.
<b>Product</b>	Select the product code for which you want to apply this Risk maintenance from the option list provided. The list will display only FX, DV and OTC products. Additionally there will be a product code ALL which you can select if you want the risk maintenance to be applicable for all the products.
<b>Tenor From</b>	Specify the starting tenor or the minimum tenor for which the risk percent is applicable. By default the value of this field will be 0 or the Tenor To of the previous record.
<b>Tenor To</b>	specify the ending tenor or the maximum tenor for which the risk percent is applicable.



Field	Description
<b>Risk Percent</b>	<p>specify the Risk percent that is applicable to the Tenor defined. Oracle Treasury will carry out the following validations on Risk Percent maintenance:</p> <ul style="list-style-type: none"> <li>• Checks that Tenor To field is not negative</li> <li>• Checks whether the Tenor To is earlier than Tenor From</li> <li>• Checks if the Risk percent is negative</li> <li>• Checks that Tenor To and Tenor From are not the same</li> </ul> <p>While inputting FX, Options or Derivatives contracts, the risk percent is derived from the risk category maintenance screen and the risk weighted amount is computed by the system.</p>

## 2.18 Dealer Maintenance

At the time of entering the details of a foreign exchange, money market, or securities deal, you will be required to enter details of the dealer who has struck the deal. The dealers at your bank, who are associated with the buying and selling of foreign exchange, money or securities in the treasury, should each be assigned an identification number (ID number). The dealer list is maintained for the bank through the 'Dealer Maintenance' screen.

### 2.18.1 Process Treasury Dealer Maintenance

This topic describes the systematic instruction to define dealer.

1. On Homescreen, specify **STDDLRT** in the text box, and click next arrow.

STEP RESULT: **Dealer Maintenance** screen is displayed.

**Figure 2.24: Dealer Maintenance**

The screenshot shows the 'Dealer Maintenance' application window. At the top, there are 'New' and 'Enter Query' buttons. Below these are two input fields: 'Dealer Id \*' (with a red asterisk indicating it is required) and 'Dealer Name'. A 'Fields' section is visible at the bottom, containing a table of fields: 'Maker', 'Checker', 'Date Time:', 'Date Time:', 'Mod No', 'Record Status', and 'Authorization Status'. An 'Exit' button is located in the bottom right corner of the window.

2. On **Dealer Maintenance** screen, specify the fields.  
For more information on fields, refer [Table 2.23: Dealer Maintenance](#)

**Table 2.23: Dealer Maintenance**

Field	Description
<b>Dealer Id</b>	This field is Mandatory. Enter a unique code to identify the dealer. The identification code can have a maximum of six alphanumeric characters. The dealer will be identified by this code for all transactions entered in Oracle Treasury. You can also retrieve dealer-wise information on the treasury deals entered into by your bank.
<b>Dealer Name</b>	You can also enter a detailed name of the dealer. The name of the dealer will be displayed whenever the dealer Id is used.

## 2.19 Treasury External Service Maintenance

This topic describes the systematic instruction to maintain external service.

- On Homescreen, specify **IFDTRXSE** in the text box, and click next arrow.  
STEP RESULT: **Treasury External Service Maintenance** screen displays.

**Figure 2.25: Treasury External Service Maintenance**

- On **Treasury External Service Maintenance** screen, specify the fields.  
For more information on fields, refer to [Table 2.24: Treasury External Service Maintenance](#).

**Table 2.24: Treasury External Service Maintenance**

Field	Description
<b>External System</b>	This field is Mandatory Specify the external system, Alternatively, you can select the external system from the option list. The list displays all valid values maintained in the system.

Field	Description
<b>Description</b>	The system displays the description based on the external system selected.
<b>External User</b>	This field is Mandatory Specify the external user.
<b>Maximum Retry Count</b>	Specify the field.
<b>Type</b>	Select the type from the drop-down list.
<b>Service Name</b>	Specify the service name. Alternatively, you can select the service name from the option list. The list displays all valid service name maintained in the system.
<b>WS Endpoint URL</b>	Provide WS endpoint URL.
<b>Rest Service Context</b>	The system displays the rest service context.
<b>Rest Service IP</b>	The system displays the rest service IP.
<b>Rest Service Pattern</b>	The system displays the rest service pattern.

## 2.20 Treasury Core Entity Error Queue

This topic describes the systematic instructions to process Core Entity Error Queue.

1. On Homescreen, specify **IFSTRERQ** in the text box, and click next arrow.

STEP RESULT: **Treasury Core Entity Error Queue** screen displays.

**Figure 2.26: Treasury Core Entity Error Queue**

2. On **Treasury Core Entity Error Queue**, specify the fields.  
For more information on fields, refer to [Table 2.25: Treasury Core Entity Error Queue - Field Description](#)  
Core entity request is moved to Timed out status based on the time out parameter maintained If no response is received from the external system within the given time, status is marked as timed out.

**Table 2.25: Treasury Core Entity Error Queue - Field Description**

<b>Field</b>	<b>Description</b>
<b>Branch Code</b>	Specify the branch Id
<b>Key ID</b>	Specify the Key ID
<b>Process Sequence Number</b>	Specify the Process Sequence Number.
<b>External Status</b>	Specify the External Status.

Field	Description
	<p>By default all error records shall be displayed.</p> <p>Select any or all of the above parameters for a query and click <b>Search</b> button. The system displays the following records meeting the selected criteria:</p> <ul style="list-style-type: none"> <li>• Branch Code</li> <li>• Message Identification</li> <li>• Key Id</li> <li>• Process Sequence Number</li> <li>• Service Code</li> <li>• External Status</li> <li>• Function</li> <li>• Customer No</li> <li>• Destination Source</li> <li>• Process</li> <li>• Authorization Status</li> <li>• Request Type</li> <li>• Reference Number</li> <li>• Simulation</li> <li>• Time</li> <li>• Communication Mode</li> <li>• Checker ID</li> <li>• Checker Date Stamp</li> <li>• Maker Id</li> <li>• Release Time</li> <li>• Source Sequence No</li> </ul> <p>You can click 'Resubmit' and 'Reject' buttons in the bottom of the screen to process the error records. External status field will display the type of error like Time out, Failed etc.</p> <p>You can submit the record for processing again by selecting single or All records and clicking 'Resubmit' button. If the record fails, then the error details can be viewed by clicking 'Error Messages' button.</p>

## 2.20.1 Start the Background Process

This topic describes the instruction to start the background process.

### CONTEXT:

The balance statement can be facilitated to run as part of a scheduled job as part of the Oracle jobs initiated during processing. The Jobs Browser screen of the application provides you the facility to run the balance statement as a synchronized task, subject to specified time intervals in hours. run the background process to generate and print advices. In addition to the generation of the advices, system will also print the advices that are scheduled to be generated during EOD processing. You can start or stop a process in the 'Jobs Browser' screen.

1. On Homescreen, specify **TRSJOBBER** in the text box, and click next arrow.

STEP RESULT: **Treasury Jobs Browser** screen displays.

**Figure 2.27: Treasury Jobs Browsers**

2. On **Treasury Jobs** screen, specify the fields.  
For more information on fields, refer to: [Table 2.26: Treasury Jobs browser - Field Description](#) (p. 42)

**Table 2.26: Treasury Jobs browser - Field Description**

Field	Description
Module	Specify the Module.
Status	Specify the status
Process	Select the process from the search box.

Select the option 'Generate Balance Report' from the Process option list. All associated accounts of the particular branch that have been marked for generation of balance statements are procured by Oracle Treasury. The debit and credit accounts considered since the previous issue of an MT941/MT942, are picked up for the

current processing. The previous messages are based on the parameters maintained for each account. This processing produces details of the statement generation.

Select any or all of the above parameters for a query and click 'Search' button. The records meeting the selected criteria are displayed. System displays the following details pertaining to the fetched records:

- Job Module
- Process
- Process Sequence Number
- Status

Check the required process in the search results table and click 'Start' button to start the process. Click 'Stop' button to stop the process, at any point.

## 2.21 Notification Process

The notification process is in two layers. In the first layer the notification process as part of jobs in FCJ scheduler sends minimal data required for notification to an internal JMS queue. In the second layer the notification process as part of an MDB that listens on internal JMS queue builds final notifications and sends them to their intended destinations. The Notification Process in Treasury using the jobs scheduler is as follows:

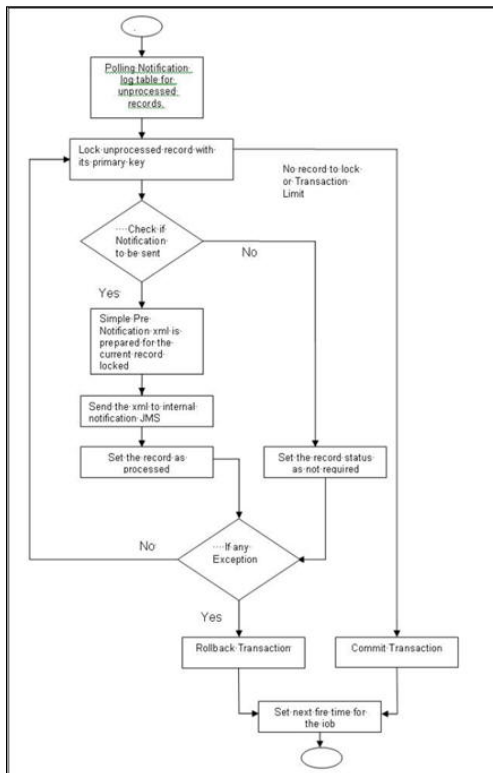
- 1) The trigger on the base table inserts key details into a static notification log table instead of Oracle AQ.
- 2) Once Job is triggered, a request is sent to EJB layer from job execution class and the notification log table is polled for unprocessed records.
- 3) Each unprocessed record is locked.
- 4) The record is verified against the notification maintenance and checked whether notification is to be sent or not.
- 5) If notification is to be sent, pre notification message xml is built and it is sent to internal notify\_queue (JMS queue).
- 6) The job is then rescheduled to fire next time based on the previous execution.

The notification process in MDB is as follows:

- 1) The Notification MDB listens on the internal notify JMS queue.
- 2) On any message received, the MDB identifies which schema to connect using the JNDI name being present as part of the message xml.
- 3) Gateway notification processing package is called from MDB in order to build the actual notifications.
- 4) In MDB the notifications built is processed and sent to the destination specified in corresponding notification.
- 5) In case of any exception the whole transaction is rolled back.

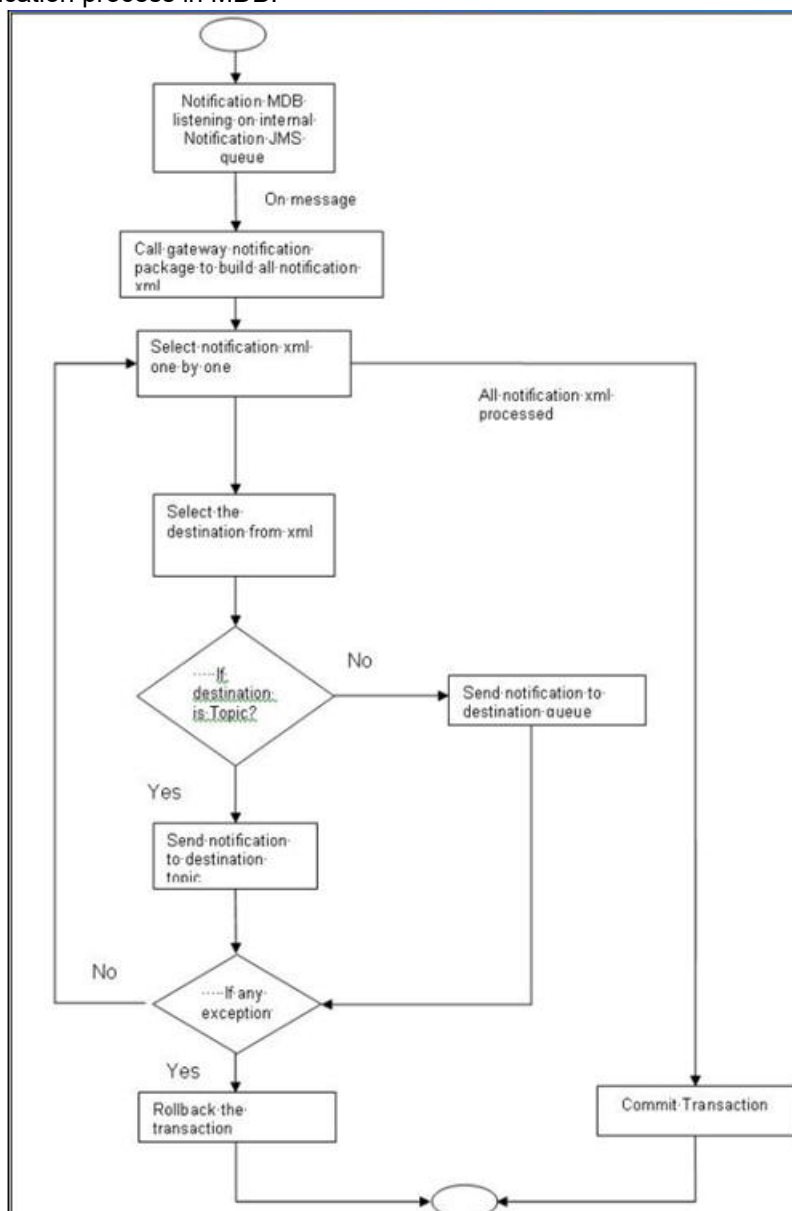
6) If all notifications are successfully processed then transaction is committed.

The flow chart of notification process in scheduler:





The flow chart for notification process in MDB:



### 2.21.1 Process Notification Parameters

This topic describes the systematic instructions to process Notification Process.

1. On Homescreen, specify **TRDNOTIF** in the text box, and click next arrow.  
STEP RESULT: **Treasury Gateway Notification Maintenance** displays.

**Figure 2.28: Treasury Gateway Notification Maintenance**

2. On **Treasury Gateway Notification Maintenance** screen, specify the fields.

For more information on fields, refer to [Table 2.27: Treasury Gateway Notification Maintenance - Field Description](#)

**Table 2.27: Treasury Gateway Notification Maintenance - Field Description**

Field	Description
<b>Notification Code</b>	The system displays a unique code to identify a notification.
<b>Description</b>	The system displays a brief description of the notification. However, you can modify the description in this screen.
<b>Operation</b>	Select the type of operation for the notification from the following. Insert - to indicate a new operation of notification function Update - To indicate a modification operation of notification
<b>Gateway Operation</b>	Specify the gateway operation name to execute query for the mentioned service.
<b>Gateway Service</b>	Specify the gateway service to be used to get the full screen response.
<b>Request Node</b>	Specify the gateway IO request node to be used in querying operation.
<b>Specific Notification</b>	Check this box to indicate the system to send specific notification. The system handles any deviation from generic notification process by creating specific triggers once you check this field.
<b>Full Screen Reply</b>	Check this box to indicate that the full screen notification response has to be sent. Otherwise, the primary key response notification is sent.
<b>Head Office</b>	Check this box to send notification only from head office.

## 2.22 Process Notifications Enroute

This topic describes the systematic instructions to Process Notifications Enroute.

1. On Homescreen, specify **TRDNTFEN** in the text box, and click next arrow.

STEP RESULT: **Treasury Notification Enroute Maintenance** displays.

2. On **Treasury Notification Enroute Maintenance** screen, specify the fields.  
For more information on fields, refer [Table 2.28: Treasury Notification Enroute Maintenance - Field Description](#)

**Table 2.28: Treasury Notification Enroute Maintenance - Field Description**

Field	Description
<b>Branch Code and Description</b>	Specify a branch for which you wish to define a topic. If you want to use a single topic for all branches and for a given notification code, you can use a wildcard '****'. Once you select a Branch Code, the corresponding description is displayed.
<b>Notification Code and Notification Description</b>	Select a notification code from the list of notification codes provided. You can indicate a wildcard '****' if a single topic needs to be used for all notifications in a branch.
<b>Destination Name</b>	Specify the destination name. Once you have captured the details, save the maintenance.

## 2.23 Process Notification Messages

This topic describes the systematic instructions to process notification messages.

1. On Homescreen, specify **TRDNTFIN** in the text box, and click next arrow.

STEP RESULT: **Treasury Notifications Installed Maintenance** screen displays.

2. On **Treasury Notifications Installed Maintenance** screen, specify the fields.

For more information on fields, refer [Table 2.29: Treasury Notifications Installed Maintenance - Field Description](#)

**Table 2.29: Treasury Notifications Installed Maintenance - Field Description**

Field	Description
<b>Branch Code</b>	This field is Mandatory. Select a branch code for which you wish to assign a notification code. Once you select the branch code, the corresponding description is displayed.
<b>Branch Name</b>	Specify the Name of the Branch
<b>Notification Code</b>	This field is Mandatory. From the list of values, select a notification code you wish to link with the branch. This will be used to generate notifications for the entire branch. Once you select the notification code, the corresponding description is displayed. In addition to maintaining a notification code for a given branch, you can also specify a topic or a queue to which the notification messages should be sent. You can define a topic/queue for a given branch and notification code in the 'Notifications Enroute' screen.
<b>Notification Description</b>	Specify the Notification Description

## 2.24 Process ECA Block Details

This topic describes the systematic instruction to process ECA Block Details.

### CONTEXT:

The system creates an ECA amount block on an account when an ECA request is approved. This blocked amount is used for ECA debit and will be active till the approved amount is debited or ECA request is canceled. The interface 'CreateEcabl' will perform the ECA block request. You can view the ECA Block details in ECA block-screen. The system allows you to only query the details in this screen. Other operations are not allowed in this screen.

1. On Homescreen, specify **TRDECABL** in the text box, and click next arrow.

STEP RESULT: **Treasury ECA Block** screen displays.

2. On **Treasury ECA Block Details** screen, specify the fields.

For more information on fields, refer [Table 2.30: Treasury ECA Block Details - Field Description](#)

**Table 2.30: Treasury ECA Block Details - Field Description**

Field	Description
<b>Branch</b>	The system displays the current branch code.
<b>Source Code</b>	The system displays the source code passed in the request.
<b>External Reference</b>	Specify the external reference number.
<b>External Credit Approval Reference</b>	Specify the ECA reference number.
<b>Effective Date</b>	The system displays the effective date.
<b>Referral Allowed</b>	Select this option to specify Referral Allowed.
<b>Mark as Error</b>	If 'Mark as Error' is enabled then the complete ECA request will be rejected even if one account fails in the validation.

Field	Description
<b>External Credit Approval Details</b>	<p>The following ECA details are displayed based on the query:</p> <ul style="list-style-type: none"> <li>• Account Branch</li> <li>• Account Number</li> <li>• Account Currency</li> <li>• Requested Amount</li> <li>• Approved Amount</li> <li>• Outstanding Amount</li> <li>• Status</li> <li>• Remarks</li> <li>• Partial Block Required</li> <li>• Instrument Code</li> <li>• Block type</li> <li>• Force Block</li> </ul>

## 2.25 Process Feature

This topic describes the systematic instructions to process Feature.

1. On Homescreen, specify **CSDTRFTM** in the text box, and click next arrow.

STEP RESULT: **Treasury Feature Maintenance** screen displays.

**Figure 2.29: Treasury Feature Maintenance**

2. On **Treasury Feature Maintenance** screen, specify the fields.  
For more information on fields, refer [Table 2.31: Treasury Feature Maintenance - Field Description](#)

**Table 2.31: Treasury Feature Maintenance - Field Description**

Field	Description
<b>Feature</b>	This Field is mandatory. Specify the feature that you need to query.
<b>Applicable</b>	The system defaults this check box when you execute the query with the feature name.

## 2.26 Maintain Feature ID

This topic describe the systematic instruction to maintain Function ID.

1. On Homescreen, specify **CSDTRFEM** in the text box, and click next arrow.

STEP RESULT: **Treasury Feature ID Maintenance** screen is displayed.

**Figure 2.30: Treasury Feature ID Maintenance**

2. On **Treasury Feature ID Maintenance** screen, specify the fields.

For more information on fields, refer [Table 2.32: Treasury Feature ID Maintenance - Field Description](#)

**Table 2.32: Treasury Feature ID Maintenance - Field Description**

Field	Description
<b>Branch Code</b>	Specify the branch where the feature needs to be installed. The adjoining option list displays all valid branch codes maintained in the system. You can select the appropriate one. The field is Mandatory.
<b>Branch Name</b>	The branch name is displayed here based on the chosen branch code.
<b>Feature Id</b>	Specify the feature that should be installed in the branch.
<b>Installed</b>	Specify the field.

## 2.27 Bank Parameters

This topic contains the following sub-topic:

- 1) [Process Confirmation/ Affirmation Type Maintenance](#)

### 2.27.1 Process Confirmation/ Affirmation Type Maintenance

This topic describes the systematic instruction to process confirmation and affirmation type maintenance.

CONTEXT:

Manual confirmations received by FAX/telephone/Hard-copy etc. (Affirmation) need to be registered for a deal. You can maintain different Confirmation/Affirmation Types using 'Confirmation/Affirmation Type Maintenance' screen.

1. On Homescreen, specify **STDCNTYP** in the text box, and click next arrow.

STEP RESULT: **Confirmation/Affirmation Type Maintenance** screen displays.

**Figure 2.31: Confirmation/Affirmation Type Maintenance**

2. On **Confirmation/Affirmation Type Maintenance** screen, specify the fields.  
For more information on fields, refer [Table 2.33: Confirmation/Affirmation Type Maintenance](#)

**Table 2.33: Confirmation/Affirmation Type Maintenance**

Field	Description
<b>Type</b>	Specify the confirmation or affirmation type.
<b>Type Description</b>	Specify the description for the selected type.
<b>Confirmation/Affirmation</b>	Select the type of contract. The options are as follows: <ul style="list-style-type: none"> <li>• Confirmation</li> <li>• Affirmation</li> </ul>
<b>Consider for Contract Confirmation</b>	Check this box for affirmation type of contract. If this field is checked for an affirmation type and an affirmation is done for the contract with this affirmation type, then the contract will be considered as 'Confirmed'.



## 2.28 Floating Rates Maintenance

This topic describes the systematic instruction to process float rate maintenance.

1. On Homescreen, specify **CFDFLRAE** in text box, and click next arrow.

STEP RESULT: **Floating Rates** screen displays.

**Figure 2.32: Floating Rates**

2. On **Floating Rates Maintenance** screen, specify the fields.

For more information on fields, refer

**Table 2.34: Floating Rates Maintenance**

Field	Description
<b>Rate Code</b>	Enter a code to identify the Floating Rate you are defining. You can associate several currencies to the rate code and specify rates for each currency. While processing a contract, you need to indicate this code to make the rate applicable to the contract. Field is Mandatory.
<b>Rate Description</b>	Specify the rate code description
<b>Rate Source and Description</b>	Specify the rate source, and its description.
<b>Effective Date</b>	Specify the date. Field is Mandatory.
<b>Branch</b>	Specify the name of the branch.
<b>Tenor code and Description</b>	Specify the starting tenor or the minimum tenor for which the risk percent is applicable. By default the value of this field will be 0 or the Tenor To of the previous record.

Field	Description
<b>Currency Code and Description</b>	Specify the currency code and its description. Field is Mandatory.
<b>Rate type and description</b>	Specify the type of the rate, and its equivalent description
<b>Interest Rate</b>	Specify the Interest Rate.

## 2.29 CD Credit Event Maintenance

This topic provides the instructions to capture the CD Credit Event Maintenance.

CONTEXT:

Credit event maintenance is used to maintain credit events applicable to credit derivative instruments. ISDA identifiable business events are captured used for credit event processing as per the contract between the two counter-parties.

1. On the Homepage, type **CODTRTYP** in the text box, and click the next arrow.

STEP RESULT: **Treasury Static Type Maintenance** screen is displayed.

**Figure 2.33: Treasury Static Type Maintenance**

2. On the **Treasury Static Type Maintenance** screen, click **New**.
3. Specify the details as required.

The below table contains the field information

**Table 2.35: Treasury Static Type Maintenance - Field Description**

Field	Description
<b>Type</b>	Specify the details of default code for credit event definition.
<b>Type Name</b>	Specify the Credit Event Name as required.
<b>Type Value</b>	Specify the Credit Event description.

## 2.30 List of Glossary

### STDTRBNK

Bank Core Parameters Maintenance - [2.1: Treasury Bank Parameters Maintenance](#) (p. 3)

### STDTRBRN

Treasury Branch Parameters Maintenance - [2.2 Treasury Branch Parameters Maintenance](#) (p. 4)

### STDTRPRC

Treasury Period Code Maintenance - [2.3.1 Maintain Period Code](#) (p. 7)

### STDTRLOC

Treasury Location Maintenance - [2.4.1 Maintain Location Details](#) (p. 10)

### STDTRCIF

Treasury Customer Maintenance - [2.4.2 Treasury Customer Additional Detail Maintenance](#) (p. 11)

### STDTRCCM

Treasury Customer Classification Maintenance - [2.5 Process Customer Classification Maintenance](#) (p. 14)

### STDTRADM

Treasury Address Code Maintenance - [2.5.1 Maintain Address Code](#) (p. 15)

### CSDTRREM

Treasury Relationship Maintenance - [2.5.2 Maintain Treasury Relationship Maintenance](#) (p. 16)

### CYDTRCSP

Treasury Customer Currency Spread Maintenance - [2.6 Maintain Customer Spreads](#) (p. 17)

### CFDTRCSM

Customer Spread Maintenance - [2.7 Treasury Customer Spread Maintenance](#) (p. 19)

### MIDTRHED

Treasury MIS Code Restriction Maintenance - [2.9.1 Maintain Allowed List of MIS Codes](#) (p. 23)

### STDTRPRG

Treasury Product Group Maintenance - [2.10 Treasury Product Group Maintenance](#) (p. 24)

### CSDTRPLM

Treasury Product Transaction Limits Maintenance - [2.11 Maintain Transaction Limits](#) (p. 25)

### CSDTRPDR

Treasury Product Restrictions - [2.12 Treasury Product Restrictions](#) (p. 27)

### STDTRFPM

Treasury FATCA Products and instruments - [2.13.1 Maintain FATCA Product](#) (p. 31)

### STDTRSCD

Treasury Status Code Maintenance - [2.14 Treasury Status Code Maintenance](#) (p. 32)

### STDTRGCM

Treasury group Code Maintenance - [2.15 Treasury Group Code Maintenance](#) (p. 33)

### STDTRRKM

Treasury Risk Category Maintenance - [2.16 Maintain Treasury Risk Category](#) (p. 35)

### CSDTRRPM

Treasury Limits Risk Percentage Maintenance - [2.17 Process Risk Percent Details](#) (p. 35)

### STDDLMT

Dealer Maintenance - [2.18.1 Process Treasury Dealer Maintenance](#) (p. 37)

### IFDTRXSE

Treasury External Service Maintenance - [2.19 Treasury External Service Maintenance](#) (p. 38)

### IFSTRERQ

Treasury Core Entity Error Queue - [2.20 Treasury Core Entity Error Queue](#) (p. 39)

### TRSJOBBER

Treasury Jobs Browser - [2.20.1 Start the Background Process](#) (p. 42)

**TRDNOTIF**

Treasury Gateway notification Maintenance - [2.21.1 Process Notification Parameters](#) (p. 45)

**TRDNTFEN**

Treasury Notification Enroute Maintenance - [2.22 Process Notifications Enroute](#) (p. 47)

**TRDNTFIN**

Treasury Notifications Installed Maintenance - [2.23 Process Notification Messages](#) (p. 48)

**TRDECABL**

Treasury ECA Block - [2.24 Process ECA Block Details](#) (p. 49)

**CSDTRFTM**

Treasury Feature Maintenance - [2.25 Process Feature](#) (p. 50)

**CSDTRFEM**

Treasury Feature ID Maintenance - [2.26 Maintain Feature ID](#) (p. 51)

**STDCNTYP**

Confirmation or Affirmation type maintenance - [2.27.1 Process Confirmation/ Affirmation Type Maintenance](#) (p. 52)

**CFDFLRAE**

Floating Rate Maintenance - [2.28 Floating Rates Maintenance](#) (p. 53)

---

## 3. Dashboard

This topic contains the following:

- 1) [Introduction](#)
- 2) [Dashboard Super User](#)
- 3) [Treasury Authorization Dashboard](#)

### 3.1 Introduction

A central dashboard is provided for non-STP operations in the Back office. This dashboard displays the count of unauthorized record per module based on events. Option is provided to view the record details and authorize by providing the module wise grids which helps to separate the pending actions on the basis of operational roles of the business users. The scope of the dashboard is to enable view of all non-authorized entries into Product processor layer of OBTR from external systems.

Based on the roles defined to the user the actions are provided to the user on login to the system. To View the pending transactions across departments the user should be a Super User.

Department mapping of a user is used to differentiate the trades and same is used as a column in dashboard with Own and Others differentiation. For normal user there are counts fetched under OWN department. In case of the user logged-in is a Super User, then OTHER department counts also is fetched based on availability of Un-Auth records

The system uses the Marker ID of the unauthorized contract to check the department from the respective user definition mapping. Below are the conditions allowed:

- If the login user is from the same department as the maker then the count will add to Own department in dashboard.
- If the department is different and the user is not a super user then such unauthorized records/contracts will not add to the respective grid count in the authorization dashboard. (There is no Others row display for non-super user).
- If the department is different and the user is a super user that such unauthorized records/contracts will add to the Other row for respective grid count.

Count in respective grid and list of unauthorized deals for respective event is same in summary screen when invoked from dashboard.

After authorization, count in respective grid should decrease on refresh.

## 3.2 Dashboard Super User

This topic provides the instructions to capture the mapping details of the super user in the dashboard.

### PREREQUISITE:

User department is maintained manually in **SMDUSRDF** for required view for user. The count in dashboard grid is as per department maintenance.

### CONTEXT:

A super user has a privilege of all the inter departmental views in the dashboard.

1. On the Homepage, type **TRDDBSUP** in the text box, and click the next arrow.

STEP RESULT: **Treasury Dashboard Super User Maintenance** screen is displayed.

**Figure 3.1: Treasury Dashboard Super User Maintenance.**

2. On the **Treasury Dashboard Super User Maintenance**, specify the details as required.

For field information, see: [Table 1: Treasury Dashboard Super User Maintenance](#)

**Table 1: Treasury Dashboard Super User Maintenance**

Field	Description
<b>User Identification</b>	The list of the values displays the list of user ids having department code from <b>SMDUSRDF</b> .
<b>Name</b>	The name default from <b>SMDUSRDF</b> is displayed.
<b>Department code</b>	The department code default from <b>SMDUSRDF</b> is displayed.
Department Name	The department name default as per department is displayed.

## 3.3 Treasury Authorization Dashboard

This topic provides the instructions to capture the dashboard details.

1. On the Homepage, type **TRDAUTDB** in the text box, and click the next arrow.

STEP RESULT: **Treasury Authorization Dashboard** is displayed.

Figure 3.2: Treasury Authorization Dashboard

Foreign Exchange			Money Market			Derivatives		
Department	Operations	Count	Department	Operations	Count	Department	Operations	Count
OWN	New	7	OWN	New	16	OWN	New	2
OWN	Amend	2	OWN	Financial Amend	4			
OWN	Reverse	2	OWN	Non-Financial Amend	4			
OWN	Payment	2	OWN	Reverse	1			
OWN	Liquidation	1	OWN	Payment Reverse	3			
OWN	Cancel/Payment Reverse	2	OWN	Rollover	2			

Exchange Traded Derivatives			Securities			Repo		
Department	Operations	Count	Department	Operations	Count	Department	Operations	Count
OWN	New Instrument	4	OWN	New Instrument	2	OWN	Repo Deal	49
OWN	Instrument Amend	4	OWN	Instrument Close	1	OWN	Repo Amend	5
OWN	Instrument Close	3	OWN	New Deal	13	OWN	Repo Liquidation	9
			OWN	Deal Amend	2	OWN	Repo Payment Reversal	7
			OWN	Deal Reverse	4			

Each section has three columns:

- Department: The department column is to capture the department of the user and will have three valid values for Own, Other and All.
- Operation: This column displays the type of operation of the record.
- Count: This column displays the number of records.

The number of rows under each section varies as per the number of grids required for each module. The department column is to display the department of the user and has three valid values: Own, Other, and All (in case no department mapping for users in SMDUSRDF)

Only a super user views the other departments whereas other users only view of their own department for each operation. In case of super users, each operation appears twice with separate counts differentiated by the Department value.

**NOTE:** Drill - down from a particular dashboard grid takes you to a summary screen which has the actionable filter and rows to arrive at the authorization screen for the function.

The Dashboard displays only the current branch transactions even when the user has Multi branch access.

Bulk authorization from the summary screen is not supported.

To view the summaries/ doing actions from respective detail screens is based on the existing SMS functionality of User Roles Function rights mappings.

Ensure the incoming record, dashboard mapping makes use of the Maker ID, valid User ID in SMDUSRDF with assigned roles/ functional rights/ department.

**NOTE:** The dashboard is not to control the user action rights for any action in OBTR but is to offer a centralized view of pending authorization items with a possible segregation of departments.

User makes use of Refresh option in the respective summary screens from dashboard to move an authorized row out of the screen.

---

### 3.3.1 Grid Details

This section provides the details of all the grids.

#### Foreign Exchange Grid Details

- New Grid: Unauthorized new FX deal is considered to display count under this grid.
- Amend Grid: Unauthorized amended FX deals is considered to display count under this grid. NDF forward deal is not displayed in this grid during fixing process.
- Reverse Grid: Unauthorized reversal FX deals is considered to display count under this grid.
- Fixing Grid: Unauthorized new Fixing FX deal booked for NDF deal is considered to display count under this grid.
- Payment Grid: Unauthorized partial FX payments is considered to display count under this grid.
- Liquidation Grid: Unauthorized manual full liquidation FX deals is considered to display count under this grid.
- Cancel/Payment Reverse grid: Unauthorized Cancellation or reversal of payments to appear under this grid.
- New Internal Swaps Grid: Unauthorized new FX Internal swaps deal is considered to display count under this grid.
- Close Internal Swaps Grid: Unauthorized closed FX Internal swaps deal is considered to display count under this grid.

#### Money Market Grid Details

- New Grid: Unauthorized new MM deal is considered to display count under this grid. New deal which is auto created during rollover action is not considered in count.
- Non-Financial Amend Grid: Unauthorized amended MM deals is considered to display count under this grid. Unauthorized CAMD event is considered.
- Financial amend: Unauthorized financial amendments for MM deals is considered to display under this grid.
- Payment reverse: Unauthorized MM Payment reversals are considered for display under this grid.
- Rate refix: Unauthorized rate refix records for MM are considered for display under this grid.
- Reverse Grid: Unauthorized reversal MM deals is considered to display count under this grid.
- Rollover Grid: Unauthorized MM rollover deals is considered to display count under this grid.
- Liquidation Grid: Unauthorized Partial/full liquidated MM deals is considered to display count under this grid.

#### Options Grid Details

- New Grid: Unauthorized new Option deal is considered to display count under this grid.
- Amend Grid: Unauthorized amended Option deals is considered to display count under this grid.
- Reverse Grid: Unauthorized reversal Option deals is considered to display count under this grid.



- 
- Exercise Grid: Unauthorized manual exercised deals is considered to display count under this grid.
  - Knock In/Out Grid: Unauthorized manual Knock In or Knock Out deals is considered to display count under this grid.
  - Termination: Unauthorized terminated option deals is considered to display count under this grid.

### **Over the counter Derivatives Grid Details**

- New Grid: Unauthorized new Swap deal is considered to display count under this grid.
- Amend Grid: Unauthorized amended Swap deals are considered to display count under this grid.
- Reverse Grid: Unauthorized reversal Swap deals are considered to display count under this grid.
- Termination: Unauthorized terminated Swap deals are considered to display count under this grid.

### **Exchange Traded Derivatives Grid Details**

- New Instrument Grid: Unauthorized new Instrument creation is considered to display count under this grid.
- Instrument Amend Grid: Unauthorized Instrument amendments are considered to display count under this grid.
- Instrument Close Grid: Unauthorized closed Instrument are considered to display count under this grid.
- New Deal Grid: Unauthorized new deals are considered to display count under this grid.
- Deal Amend Grid: Unauthorized amended deal is considered to display count under this grid.
- Deal Reverse Grid: Unauthorized reversed deal are considered to display count under this grid.
- Matching Grid: Unauthorized manually matched deal is considered to display count under this grid.
- Exercise and Assign Grid: Unauthorized manual exercise and assigned deals are considered to display count under this grid.
- Exercise and Assign Reverse Grid: Unauthorized reversed manual exercise and assigned deals are considered to display count under this grid.
- Margin Settlement: Unauthorized margin settlement deals are considered to display count under this grid.

### **Securities Grid Details**

- New Instrument Grid: Unauthorized new Instrument creation is considered to display count under this grid.
- Instrument Amend Grid: Unauthorized Instrument amendments is considered to display count under this grid.
- Instrument Close Grid: Unauthorized closed Instrument is considered to display count under this grid.
- New Deal Grid: Unauthorized new deals are considered to display count under this grid.
- Deal Amend Grid: Unauthorized amended deal is considered to display count under this grid.
- Deal Reverse Grid: Unauthorized reversed deal are considered to display count under this grid.
- Coupon Settlement Grid: Unauthorized FI Corporate actions is considered to display count under this grid.

- 
- Block/Release deal Grid: Unauthorized manual block or release of existing securities are considered to display count under this grid.
  - EQ corporate action grid: Unauthorized EQ Corporate action is considered to display the count under this grid.
  - Rate refix grid: Unauthorized SE rate refix is considered to display count under this grid.
  - Custody Movement Grid: Unauthorized manual movement of securities between custodian accounts are considered to display count under this grid.

### **Repo Grid Details**

- Repo Deal Grid: Unauthorized new Repo or Reverse Repo deal is considered to display count under this grid.
- Repo Amend Grid: Unauthorized Repo or Reverse Repo amended deals are considered to display count under this grid. Unauthorized CAMD event is considered.
- Repo Reversal Grid: Unauthorized Repo or Reverse Repo reversal deals are considered to display count under this grid.
- Repo Liquidation Grid: Unauthorized Repo or Reverse Repo liquidated deals are considered to display count under this grid.
- Repo payment reversal grid: Unauthorized Repo payment reversals are considered to display count under this grid.

## 4. Error Messages for Core Entities and Services

### 4.1 Error Codes and Message

Table 4.1: Error Codes and Messages

Function ID	Error Code	Message
STDTRCIF	TR-CIF002	CLS details cannot be entered when the customer is not a CLS participant.
STDTRCIF	ST-VALTR10	Multiple Swift Confirmation Parameters is applicable only when Fund Type Customer is selected.
STDTRCIF	ST-VALTR14	Settlement Member BIC Code is mandatory when Settlement Member Only option is selected.
STDTRCIF	ST-VALTR11	Generate Confirmation Message to should be given for the fund type customer.
STDTRCIF	ST-VALTR12	Custodian BIC Code and Settlement BIC Code is mandatory when Both option is selected.
STDTRCIF	ST-VALTR13	Custodian BIC Code is mandatory when Custodian Only option is selected
CSDTRPDR	CS-TR-018	Branch Restriction is not applicable for \$1 products
CSDTRPDR	CS-TR-017	Customer List and Category List are not applicable for Retail Teller/Fixed Assets/Islamic Assets products
STDCNTYP	ST_FXMM-01	Consider for contract confirmation flag is applicable for only Affirmation type of maintenance
CFDFLRAE	CF-TR-021	Mandatory field Rate Source is blank

---

## 5. Function ID - Glossary

**STDTRBNK**

Bank Core Parameters Maintenance - [2.30 List of Glossary](#) (p. 55)

**STDTRBRN**

Treasury Branch Parameters Maintenance - [2.30 List of Glossary](#) (p. 55)

**STDTRPRC**

Treasury Period Code Maintenance - [2.30 List of Glossary](#) (p. 55)

**STDTRLOC**

Treasury Location Maintenance - [2.30 List of Glossary](#) (p. 55)

**STDTRCIF**

Treasury Customer Maintenance - [2.30 List of Glossary](#) (p. 55)

**STDTRCCM**

Treasury Customer Classification Maintenance - [2.30 List of Glossary](#) (p. 55)

**STDTRADM**

Treasury Address Code Maintenance - [2.30 List of Glossary](#) (p. 55)

**CSDTRREM**

Treasury Relationship Maintenance - [2.30 List of Glossary](#) (p. 55)

**CYDTRCSP**

Treasury Customer Currency Spread Maintenance - [2.30 List of Glossary](#) (p. 55)

**CFDTRCSM**

Customer Spread Maintenance - [2.30 List of Glossary](#) (p. 55)

**MIDTRHED**

Treasury MIS Code Restriction Maintenance - [2.30 List of Glossary](#) (p. 55)

**STDTRPRG**

Treasury Product Group Maintenance - [2.30 List of Glossary](#) (p. 55)

**CSDTRPLM**

Treasury Product Transaction Limits Maintenance - [2.30 List of Glossary](#) (p. 55)

**CSDTRPDR**

Treasury Product Restrictions - [2.30 List of Glossary](#) (p. 55)

**STDTRFPM**

Treasury FATCA Products and instruments - [2.30 List of Glossary](#) (p. 55)

**STDTRSCD**

Treasury Status Code Maintenance - [2.30 List of Glossary](#) (p. 55)

**STDTRGCM**

Treasury group Code Maintenance - [2.30 List of Glossary](#) (p. 55)

**STDTRRKM**

Treasury Risk Category Maintenance - [2.30 List of Glossary](#) (p. 55)

**CSDTRRPM**

Treasury Limits Risk Percentage Maintenance - [2.30 List of Glossary](#) (p. 55)

**STDDL RMT**

Dealer Maintenance - [2.30 List of Glossary](#) (p. 55)

**IFDTRXSE**

Treasury External Service Maintenance - [2.30 List of Glossary](#) (p. 55)

**IFSTRERQ**

Treasury Core Entity Error Queue - [2.30 List of Glossary](#) (p. 55)

**TRSJOBBER**

Treasury Jobs Browser - [2.30 List of Glossary](#) (p. 55)

**TRDNOTIF**

Treasury Gateway notification Maintenance - [2.30 List of Glossary](#) (p. 55)

**TRDNTFEN**

Treasury Notification Enroute Maintenance - [2.30 List of Glossary](#) (p. 55)

**TRDNTFIN**

Treasury Notifications Installed Maintenance - [2.30 List of Glossary](#) (p. 55)

**TRDECABL**

Treasury ECA Block - [2.30 List of Glossary](#) (p. 55)

**CSDTRFTM**

Treasury Feature Maintenance - [2.30 List of Glossary](#) (p. 55)

**CSDTRFEM**

Treasury Feature ID Maintenance - [2.30 List of Glossary](#) (p. 55)

**STDCNTYP**

Confirmation or Affirmation type maintenance - [2.30 List of Glossary](#) (p. 55)

**CFDFLRAE**

Floating Rate Maintenance - [2.30 List of Glossary](#) (p. 55)